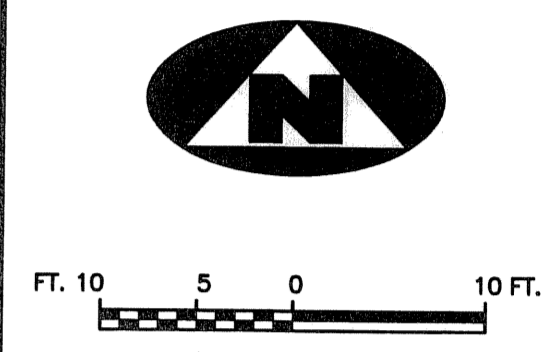
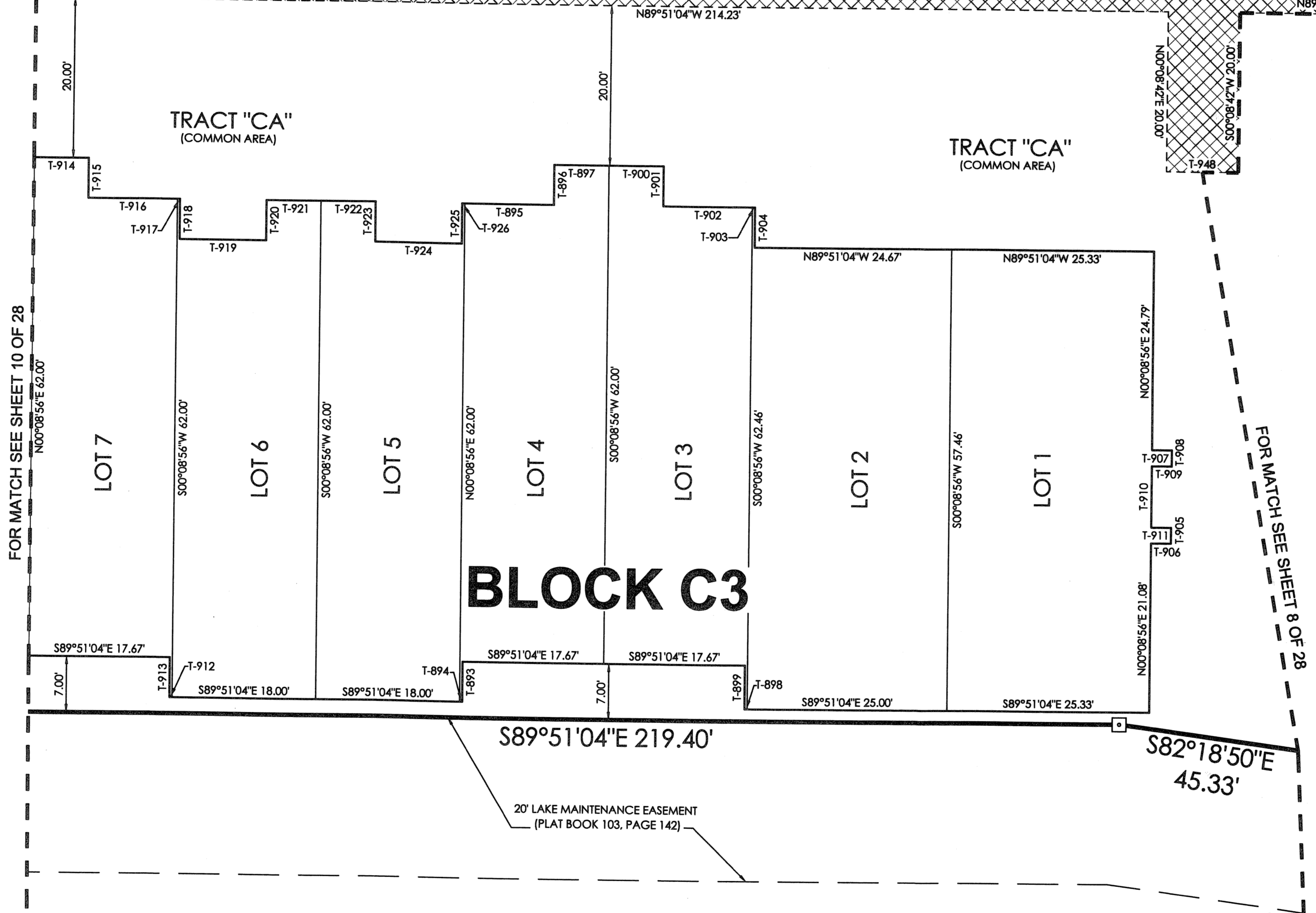
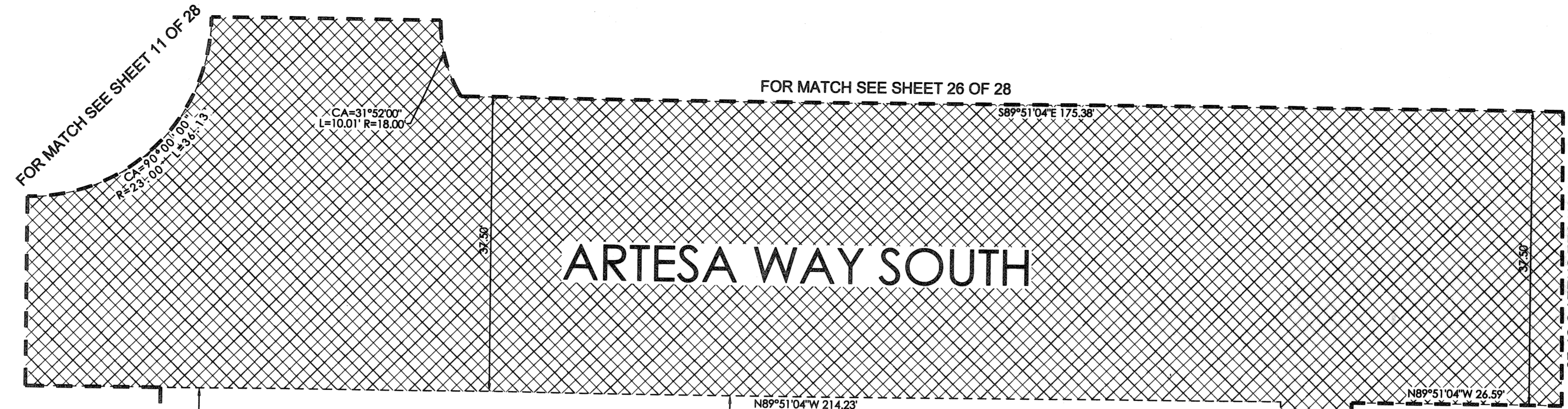


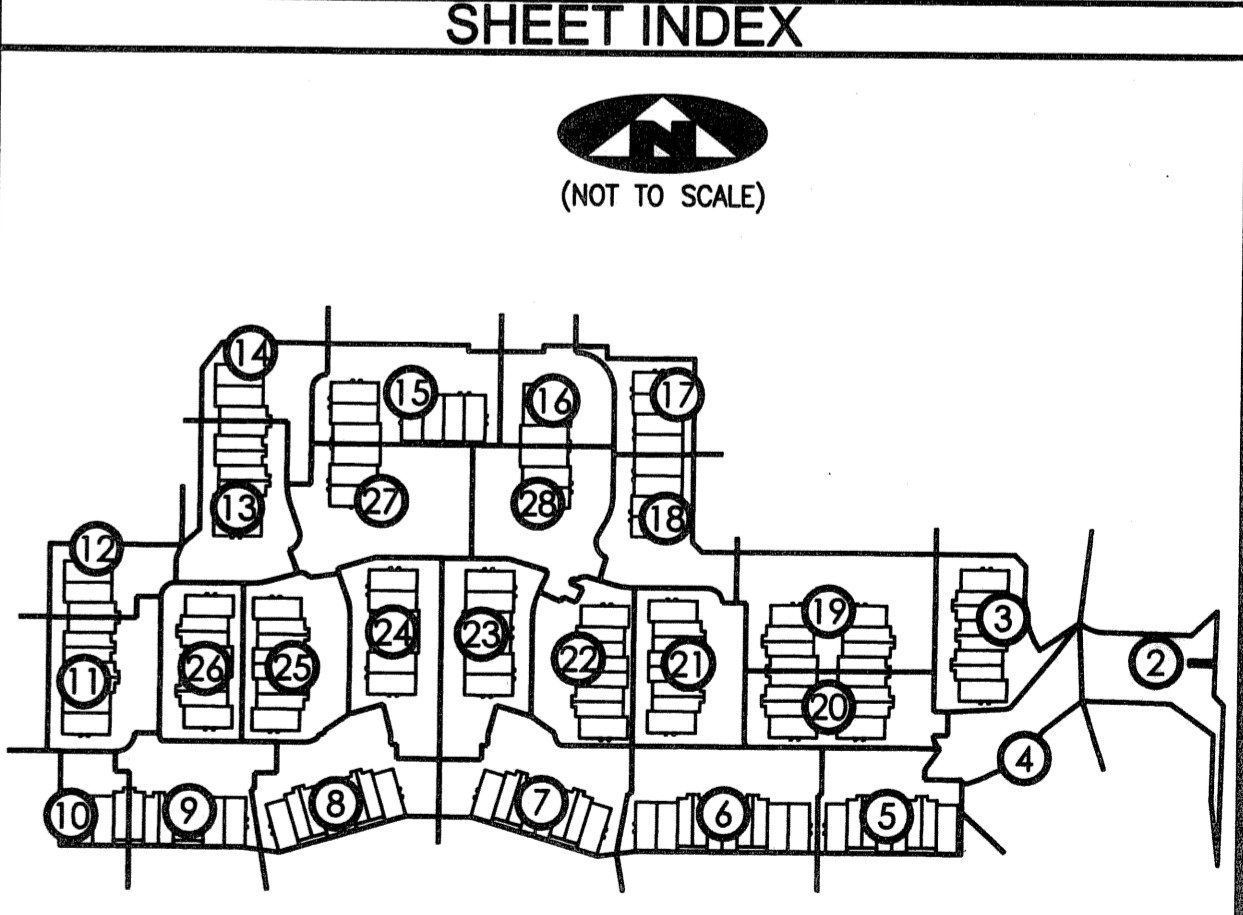
CIELO TOWNHOMES AT THE SHOPS OF DONALD ROSS

BEING A REPLAT OF TRACT "R", THE SHOPS OF DONALD ROSS REPLAT OF TRACT "A", RECORDED IN PLAT BOOK 103, PAGE 142, PUBLIC RECORDS, PALM BEACH COUNTY, FLORIDA AND LYING IN THE NORTHWEST ONE-QUARTER OF SECTION 25, TOWNSHIP 41 SOUTH, RANGE 42 EAST, CITY OF PALM BEACH GARDENS, PALM BEACH COUNTY, FLORIDA.

165



TANGENT TABLE	
T-893	N00°08'56"E 5.00'
T-894	S89°51'04"E 0.33'
T-895	N89°51'04"W 11.17'
T-896	S00°08'56"W 5.00'
T-897	N89°51'04"W 6.83'
T-898	S89°51'04"E 0.33'
T-899	S00°08'56"W 5.44'
T-900	N89°51'04"W 6.83'
T-901	N00°08'56"E 5.00'
T-902	N89°51'04"W 11.17'
T-903	N89°51'04"W 0.33'
T-904	N00°08'56"E 5.00'
T-905	N00°08'56"E 2.00'
T-906	S89°51'04"E 2.50'
T-907	N89°51'04"W 2.50'
T-908	N00°08'56"E 2.00'
T-909	S89°51'04"E 2.50'
T-910	N00°08'56"E 7.58'
T-911	N89°51'04"W 2.50'
T-912	S89°51'04"E 0.33'
T-913	S00°08'56"W 5.00'
T-914	N89°51'04"W 6.83'
T-915	N00°08'56"E 5.00'
T-916	N89°51'04"W 11.17'
T-917	N89°51'04"W 0.33'
T-918	N00°08'56"E 5.00'
T-919	N89°51'04"W 10.83'
T-920	S00°08'56"W 5.00'
T-921	N89°51'04"W 6.83'
T-922	N89°51'04"W 6.83'
T-923	N00°08'56"E 5.00'
T-924	N89°51'04"W 10.83'
T-925	S00°08'56"W 5.00'
T-926	N89°51'04"W 0.33'
T-948	N89°51'18"W 9.00'



⑨ = DENOTES SHEET NUMBER OF 28

LEGEND

(R) DENOTES A RADIAL LINE	R DENOTES RADIUS DISTANCE	⊙ DENOTES A SET PERMANENT CONTROL POINT (LB 7344)	□ DENOTES A SET PERMANENT REFERENCE MONUMENT (LB 7344)
C/L DENOTES A CENTERLINE	L DENOTES ARC LENGTH DISTANCE	■ DENOTES A FOUND PERMANENT MONUMENT (LB 2171)	
DE DENOTES DRAINAGE EASEMENT	CA DENOTES CENTRAL ANGLE		
SUA DENOTES SEACOAST UTILITY AUTHORITY	LCB DENOTES LONG CHORD BEARING		
LS DENOTES LIFT STATION EASEMENT	CHD DENOTES CHORD DISTANCE		
EAE DENOTES EMERGENCY ACCESS EASEMENT	ORB DENOTES OFFICIAL RECORDS BOOK	▨ DENOTES A SEACOAST UTILITY EASEMENT (ORB 17773, PAGE 469)	▩ DENOTES AN INGRESS, EGRESS, DRAINAGE AND UTILITY EASEMENT (PB 103, PAGE 142)
	PB DENOTES PLAT BOOK		

SURVEYOR'S NOTES

1. THE BASE BEARING, AS SHOWN HEREON, IS S01°22'09"W ALONG THE EAST LINE OF TRACT "R", THE SHOPS OF DONALD ROSS REPLAT OF TRACT "A", RECORDED IN PLAT BOOK 103, PAGE 142.
2. IN THOSE INSTANCES WHERE UTILITY OR DRAINAGE STRUCTURES ARE CONSTRUCTED IN CONFLICT WITH THE PLATTED PERMANENT CONTROL POINT POSITION STRADDLERS MONUMENTED AS PERMANENT CONTROL POINTS WILL BE SET TO REFERENCE THE PLATTED POSITION.
3. LINES THAT INTERSECT CURVES ARE NOT RADIAL UNLESS OTHERWISE NOTED.
4. THIS INSTRUMENT WAS PREPARED BY WM. R. VAN CAMPEN, P.S.M. NO. 2424, IN AND FOR THE OFFICES OF ASSOCIATED LAND SURVEYORS, INC., 4152 WEST BLUE HERON BOULEVARD, SUITE 121, RIVIERA BEACH, FLORIDA, 33404

FILE: CIELOPLOT	
FB:	WO.NO.: P238
SCALE: 1"=10'	DATE: 12/25/2004
DWN: KVC	SHEET 9 OF 28

ASSOCIATED LAND SURVEYORS, INC.

4152 W. BLUE HERON BOULEVARD—SUITE 121
RIVIERA BEACH FLORIDA 33404 LB NO. 7344
PHONE: (561) 848-2102 FAX: (561) 844-9659 EMAIL: ALLSURVEY@aol.com